

RECORDED CRIME & DISORDER UPDATE

This report sets out the recorded crime and anti-social behaviour figures for April – October 2012 compared to the same period in 2011/12. Overall, total recorded crime has reduced by 5.1% and ASB incidents have reduced by 23.5%.

Crime Statistics for Stockton April 2012 – October 2012

Crime Statistics	April - October			
	2012/13	2011/12	Change	% Change
Violence against the person	1303	1200	103	8.6%
Violence with injury	682	662	20	3.0%
Robbery	43	49	-6	-12.2%
Sexual	126	131	-5	-3.8%
House Burglary	323	303	20	6.6%
Other Burglary	456	447	9	2.0%
Theft of Motor Vehicle /TWOC	114	168	-54	-32.1%
Theft from Motor Vehicle	307	308	-1	-0.3%
Vehicle Interference	32	38	-6	-15.8%
Other Theft	2045	2181	-136	-6.2%
Criminal Damage	1255	1489	-234	-15.7%
Forgery & Fraud	151	155	-4	-2.6%
Drug Offences	271	322	-51	-15.8%
Other Crime	88	76	12	15.8%
TOTAL	6514	6867	-353	-5.1%
<i>Violent Crime</i>	<i>1472</i>	<i>1380</i>	<i>92</i>	<i>6.7%</i>
<i>Vehicle Crime</i>	<i>453</i>	<i>514</i>	<i>-61</i>	<i>-11.9%</i>
<i>Serious Acquisitive</i>	<i>822</i>	<i>799</i>	<i>23</i>	<i>2.9%</i>
<i>Shoplifting</i>	<i>766</i>	<i>702</i>	<i>64</i>	<i>9%</i>

The majority of crimes are showing a decrease when compared to the previous year. However, the categories of note with an increase relate to violence, house burglary and shoplifting.

The increase in violence relates mainly to a peak in offending during August and October (in particular DV). House burglary showed an increase in September, but reduced during October 2012. Shoplifting remains a concern showing an increase of 9%.

ASB Statistics for Stockton April 2012 – October 2012

ASB incidents have reduced by 23.5% compared to the same period last year.

ASB Statistics	April - October			
	2012/13	2011/12	Change	% Change
AS21 - Personal	2595	3109	-514	-16.5%
AS22 - Nuisance	4711	6116	-1405	-23.0%
AS23 - Environmental	202	591	-389	-65.8%
TOTAL ASB	7508	9816	-2308	-23.5%

The following table shows the rate per thousand population for total crime and ASB across the Tees Valley. Stockton continues to have the lowest rate per thousand population of all districts for total crime, showing a slight rise in ASB incidents compared to the lowest rate held by Redcar & Cleveland.

Rate per 1,000 population		
District	ASB	Total Crime
Hartlepool	44.2	41.3
Middlesbrough	52.9	59.9
Redcar & Cleveland	38.5	34.2
Stockton	38.9	33.7

Breakdown of Publically Reported and Police Generated Crime

During this year Cleveland Police adopted a new way of measuring performance focussing on the reduction of publically reported crime in line with national best practice to promote positive policing. Publically Reported Crime is those crimes that are reported by the public. A separate record is kept of 'Police Generated Crime', ie the crimes that are recorded following proactive policing such as drug raids, public order arrests etc. The tables below and the graph that follows show both of these categories from April to October 2012.

During this period both ways of recording are showing similar decreases with a 5.5% decrease in publically reported crime, and a 5.1% decrease in police generated crime year to date.

Crime Statistics	April 2012- October 2012			
	2012/13	2011/12	Change	% Change
Publicly Reported				
Violence against the person	1127	1039	88	8.5%
<i>Violence with injury</i>	682	662	20	3.0%
<i>Violence without injury</i>	445	377	68	18.0%

Sexual offences	126	131	-5	-3.8%
<i>Rape</i>	35	34	1	2.9%
<i>Other Sexual offences</i>	91	97	-6	-6.2%

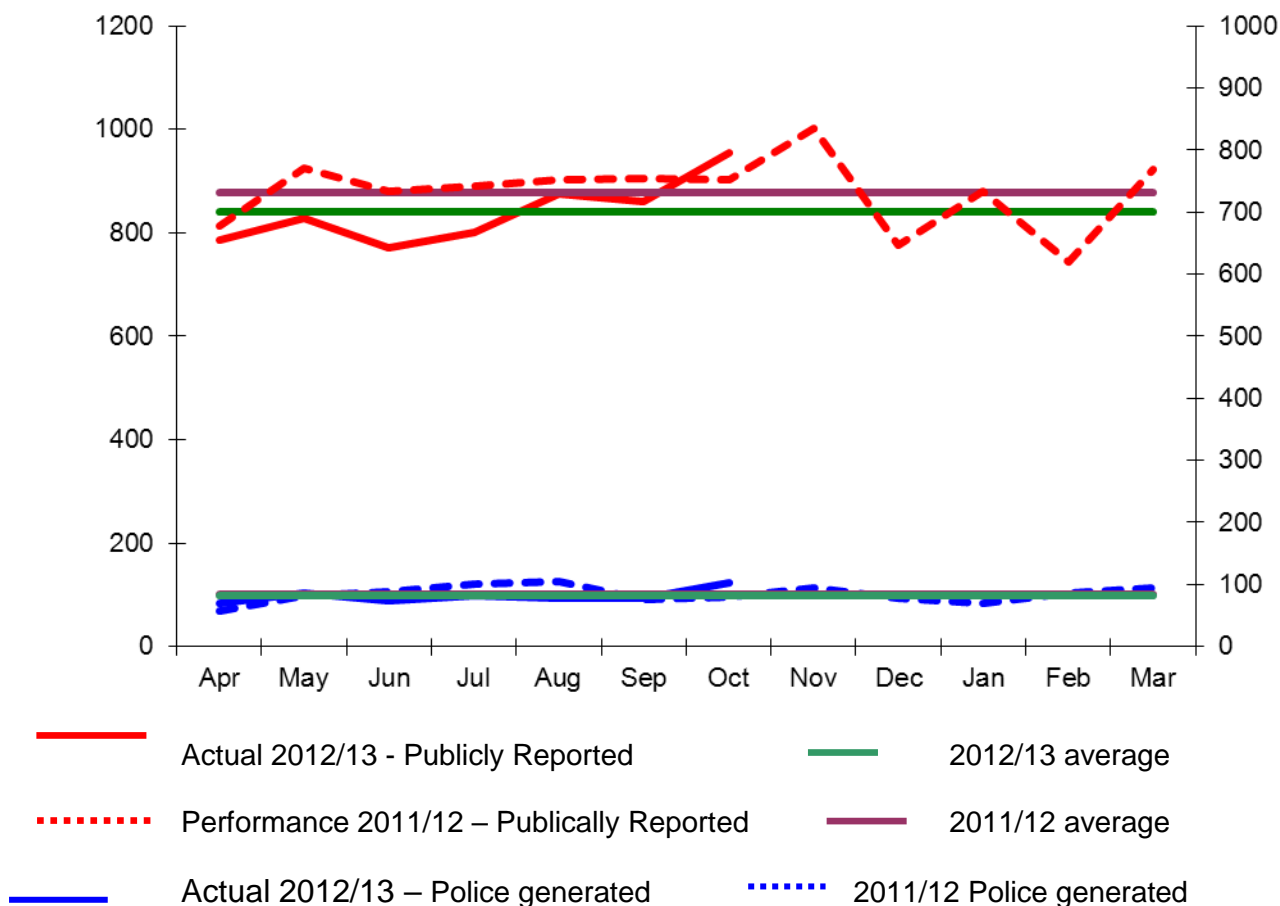
Acquisitive Crime	3375	3561	-186	-5.2%
<i>Burglary - Domestic</i>	324	302	22	7.3%
<i>Burglary - Non domestic</i>	456	447	9	2.0%
<i>Robbery - personal</i>	39	44	-5	-11.4%
<i>Robbery - Business</i>	4	5	-1	-20.0%
<i>Vehicle Crime (Inc Inter.)</i>	453	514	-61	-11.9%
<i>Shoplifting</i>	767	702	65	9.3%
<i>Other Acquisitive</i>	1332	1547	-215	-13.9%

Criminal damage and Arson	1248	1484	-236	-15.9%
----------------------------------	------	------	------	--------

Publicly reported offences	5876	6215	-339	-5.5%
-----------------------------------	-------------	-------------	-------------	--------------

Crime Statistics	April – October 2012			
	2012/13	2011/12	Change	% Change
Police Generated				
Public Disorder	202	164	38	23.2%
Drug offences	271	322	-51	-15.8%
<i>Trafficking of drugs</i>	59	64	-5	-7.8%
<i>Possession/Use of drugs</i>	212	258	-46	-17.8%
Crime Prevented / Disrupted	70	73	-3	-4.1%
Other State based / Non Victim	28	29	-1	-3.4%
Police Generated offences	571	588	-17	-2.9%
Fraud and Forgery	72	66	6	9.1%
Total Recorded Crime	6519	6869	-350	-5.1%

Publicly reported and Police Generated Offences Tracking Report



Police generated and publicly reported and crime in comparison within the Tees Valley

The following tables show the number of police generated and publicly reported crimes, with rates included in brackets displaying comparison to the other three Tees Valley sub regions.

The rates calculated have been generated using the 2010 population statistics as follows:

- Stockton – on –Tees: 192,900
- Hartlepool: 91,900
- Middlesbrough: 139,200
- Redcar: 139,300

Colour coordination denotes a green as best and a red as worst in performance.

Crime Statistics Police Generated	April – October 2012			
	Stockton	Hartlepool	Middlesbrough	Redcar
Public Disorder	202 (1.0)	147 (1.6)	315 (2.2)	147 (1.1)
Drug offences	271 (1.4)	246 (2.7)	448 (3.2)	194 (1.4)
<i>Trafficking of drugs</i>	59 (0.3)	55 (0.6)	53 (0.4)	47(0.3)
<i>Possession/Use of drugs</i>	212 (1.0)	191 (2.0)	395 (2.8)	147(1.0)
Crime Prevented / Disrupted	70 (0.4)	67 (0.7)	116 (0.8)	66 (0.5)
Other State based / Non Victim	28 (0.14)	23 (0.2)	21 (0.15)	19 (0.14)
Police Generated offences	571 (3.0)	483 (5.2)	900 (6.4)	426 (3.0)
Fraud and Forgery	72 (0.4)	37 (0.4)	63 (0.45)	40 (0.3)
Total Recorded Crime	6519 (33.7)	3801 (41.3)	8351 (59.9)	4769 (34.2)

Crime Statistics Publicly Reported	April 2012- October 2012			
	Stockton	Hartlepool	Middlesbrough	Redcar
Violence against the person	1127 (5.8)	777 (8.4)	1408 (10.1)	725 (5.2)
<i>Violence with injury</i>	682 (3.5)	467(5.0)	835 (5.9)	452 (3.2)
<i>Violence without injury</i>	445 (2.3)	310 (3.3)	573 (4.1)	273 (1.9)
Sexual offences	126 (1.0)	48 (0.5)	107 (0.7)	45 (0.3)
<i>Rape</i>	35 (0.2)	26 (0.2)	30(0.2)	13 (0.1)
<i>Other Sexual offences</i>	91 (0.5)	22 (0.2)	77 (0.5)	32(0.2)
Acquisitive Crime	3375 (17.4)	1650 (18.0)	4485 (32.2)	2410 (17.3)
<i>Burglary - Domestic</i>	324 (1.7)	173 (1.8)	590 (4.2)	231 (1.6)
<i>Burglary - Non domestic</i>	456 (2.3)	179 (2.0)	477(3.4)	383(2.7)
<i>Robbery - personal</i>	39 (0.2)	13 (0.1)	92 (0.6)	14 (0.1)
<i>Robbery - Business</i>	4 (0.02)	5 (0.05)	5 (0.03)	5 (0.03)
<i>Vehicle Crime (Inc Inter.)</i>	453 (2.3)	213 (2.3)	785 (5.6)	346 (2.4)
<i>Shoplifting</i>	767(4.0)	398(4.3)	1143 (8.2)	534 (3.8)
<i>Other Acquisitive</i>	1332 (7.0)	669 (7.2)	1393 (10)	897(6.4)
Criminal damage and Arson	1248 (6.4)	806 (8.7)	1388 (10.0)	1123(8.1)
Publicly reported offences	5876 (30.4)	3281 (35.7)	7388 (53.0)	4303 (30.8)